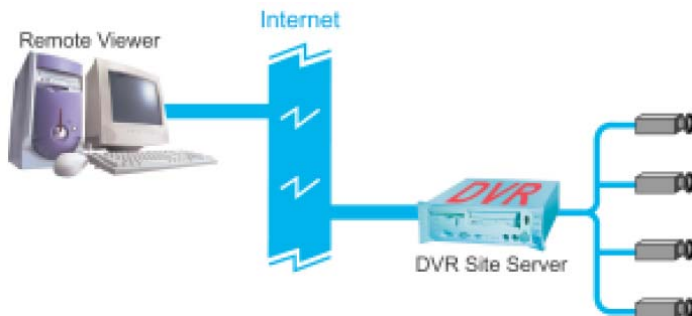



# Remote Viewer

Remote Viewer allows you or any user to view remote video cameras, control remote PTZ cameras, remotely record videos on the local drive, talk with another person through two-way voice communication and play back video recordings on the local drive via a Web browser. Users who have user accounts in the Site Server that are assigned with at least the "Remote User" privilege level can access cameras remotely over the Internet, Intranet, or through direct modem connection.

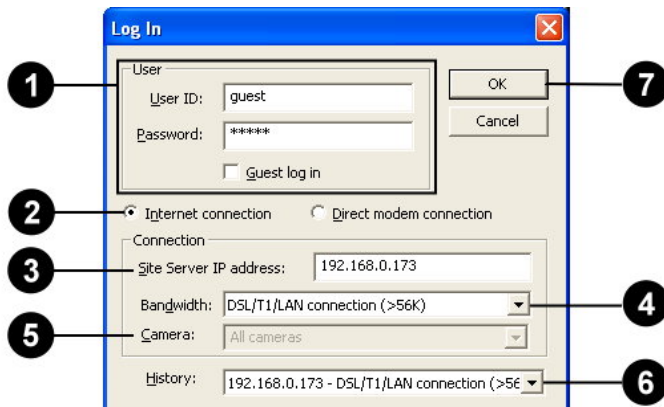
## Using Remote Viewer through an Internet connection



Launch Remote Viewer by clicking Start - Programs - Remote Viewer HV v1.10 -

Remote Viewer. When the program opens, click the  button to open the "Log In" dialog box and configure the settings to be able to connect to the DVR site server using an Internet connection.

To configure the settings in the "Log In" dialog box:



1. Enter a valid user ID and password.

Note: If the remote DVR Site Server does not enable the access control, select the "Guest log

in" check box.

2. Select "Internet connection."
3. Enter the IP address or domain name of the remote DVR Site Server.
4. Select the bandwidth speed of the Internet connection.
5. By default, All cameras is selected.
6. You can select a past connection from the drop-down list to fill out the Connection information.
7. Click OK to connect to the DVR site server.

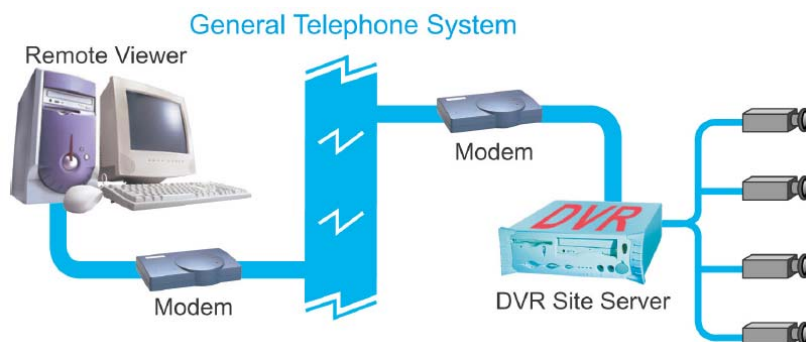
After clicking OK, you should be able to see live video feed from the remote camera(s) on the split screen display.

Note:

1. Before using Remote Viewer through an Internet connection, make sure that the remote DVR Site Server has "Allow remote access" and "Enable Web server" selected in Preferences - General tab (valid TCP port must also be entered), the DVR machine has been assigned a unique IP address, and your client machine that runs Remote Viewer can connect to the Internet.
2. The Web browser version you have should either be Microsoft Internet Explorer version 5.5 or a later version.

## Using Remote Viewer through a direct modem connection

Direct Modem Connection is a connection between two modem devices through the General Telephone System that allows users to view remote cameras. Follow the steps on the next page to set up the direct modem connection at the DVR Site Server machine and a remote client machine."



## Setting up the DVR Site Server machine


1. Install a modem device (card) to the DVR machine if the machine doesn't have a modem installed.
2. Connect a valid telephone line to the "Line" port of modem device (card).
3. Set up an advanced connection in Windows for receiving incoming calls. Please refer to the section "How to set up an Advanced Connection" for the details.

Make sure to assign a fixed IP address to your LAN card, whether it is a global IP address or a local IP address. If you don't want to assign a fixed IP address to your LAN card, try to disable the LAN card when enabling the direct modem connection.

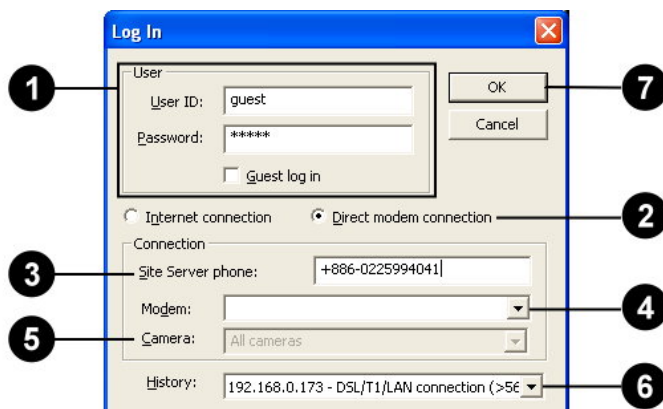
## Setting up a client machine for remote watch

1. Install a modem device (card) to the client machine if the machine doesn't have a modem installed.
2. Connect a valid telephone line to the "Line" port of modem device (card).
3. Install the Remote Viewer program from the product CD.

## Building a direct modem connection

Launch Remote Viewer by clicking Start - Programs - Remote Viewer HV v1.2 – Remote Viewer. When the program opens, click the  button to open the "Log In" dialog box and configure the settings to be able to connect to the DVR site server using a direct modem connection.

To configure the settings in the "Log In" dialog box:



1. Enter a valid user ID and password.

Note: If the remote DVR Site Server does not enable the access control, select the "Guest log in" check box.

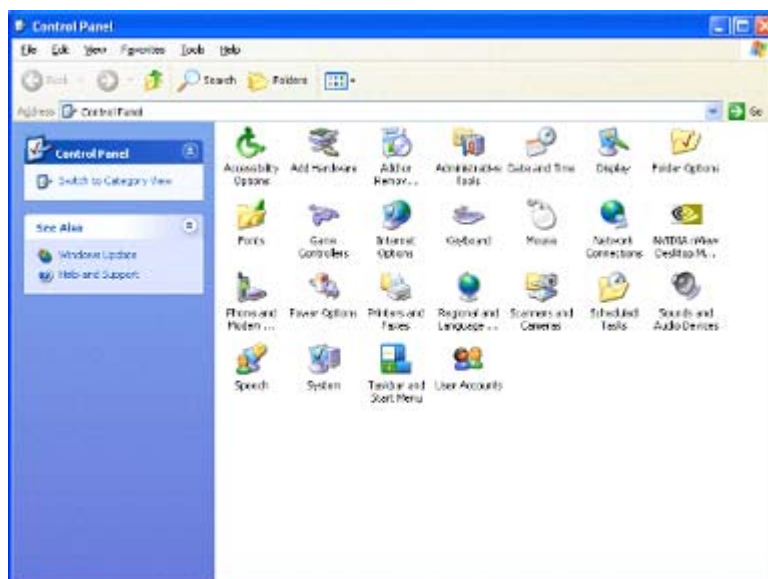
2. Select "Direct modem connection."
3. Specify the telephone number of the DVR Site Server that you want to watch via remote.
4. Specify the modem driver at the local machine.
5. By default, All cameras is selected.
6. You can select a past connection from the drop-down list to fill out the Connection information.
7. Click OK to connect to the DVR site server.

After clicking OK, you should be able to see live video feed from the remote camera(s) on the split screen display.

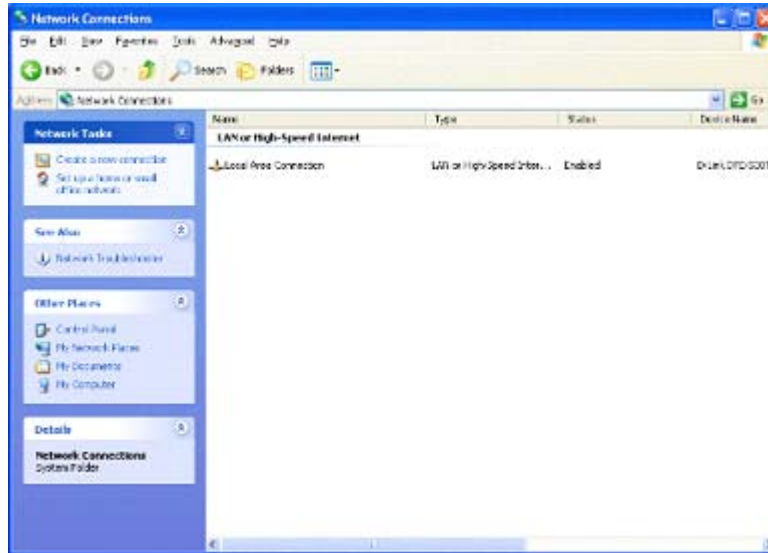
## Setting up an Advanced Connection

### For Windows XP

1. Plug a modem device into a COM port of the DVR Site Server machine.
2. Install the driver for the modem device.
3. Click the "Start" button on your Windows taskbar and select "Control Panel" to open the Control Panel window.



4. Click the "Network Connections" icon in the "Control Panel" window to open "Network Connections" window.

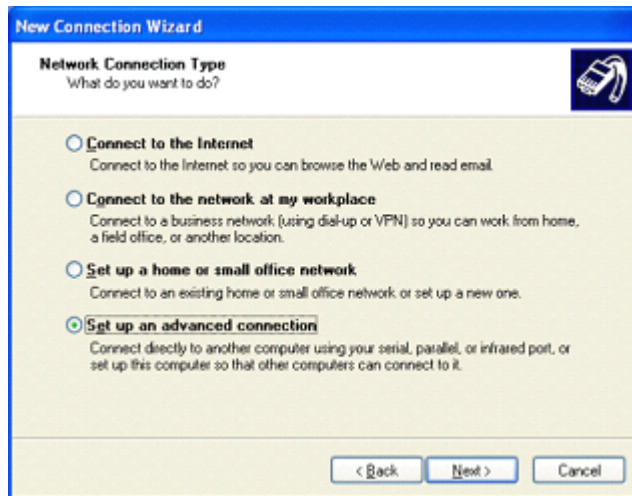


Note: If the "Location Information" dialog box opens, please fill in the area code and the telephone number of the telephone line connected to the modem.

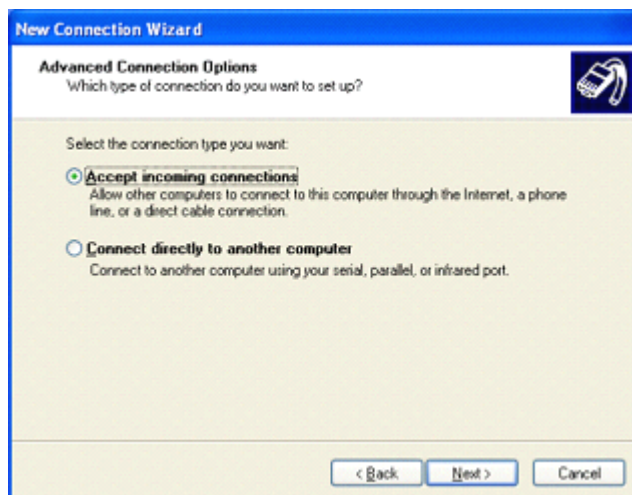
5. Click the "Create a new connection" item to launch the "New Connection Wizard" window. Click the "Next" button.



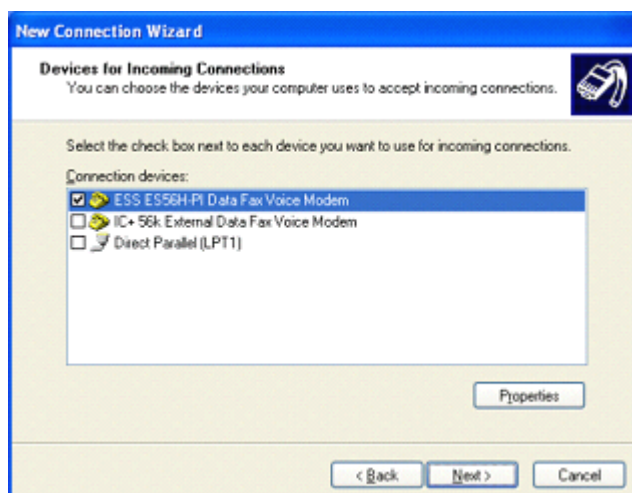
6. Select the "Set up an advanced connection" option then click the "Next" button.



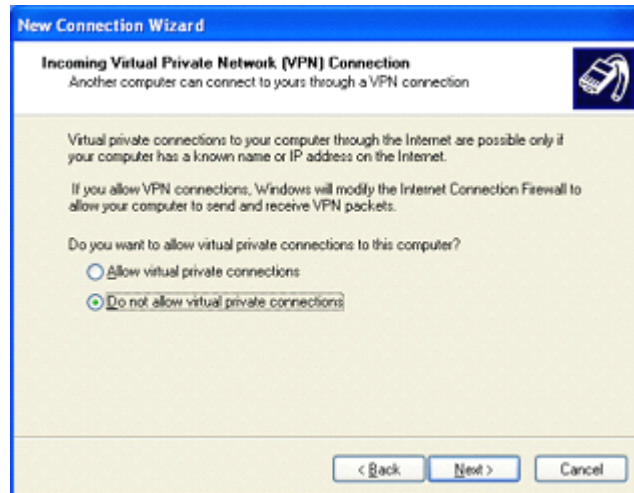
7. Select the "Accept incoming connections" option then click the "Next" button.



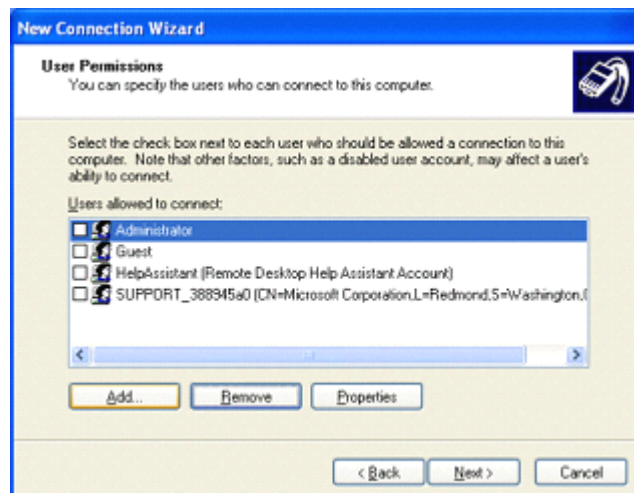
8. In the "Connection devices" list, select the modem driver then click the "Next" button.



9. Select the "Allow virtual private connections" or "Do not allow virtual private connections" option then click the "Next" button.



10. Click the "Add" button to open the "New User" dialog box.

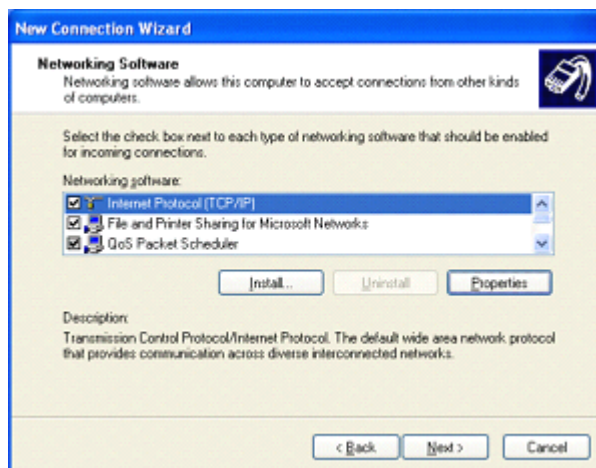




11. Type in "DVR" for "User name", "Password" and "Confirm password" then click the "OK" button to close the dialog box. Click the "Next" button.



12. In the "Networking software" list, select the "Internet Protocol (TCP/IP)" item and click the "Properties" button to open the "Incoming TCP/IP Properties" dialog box.





13. Select the "Allow calling computer to specify its own IP address" option then click the "OK" button to close the dialog box.



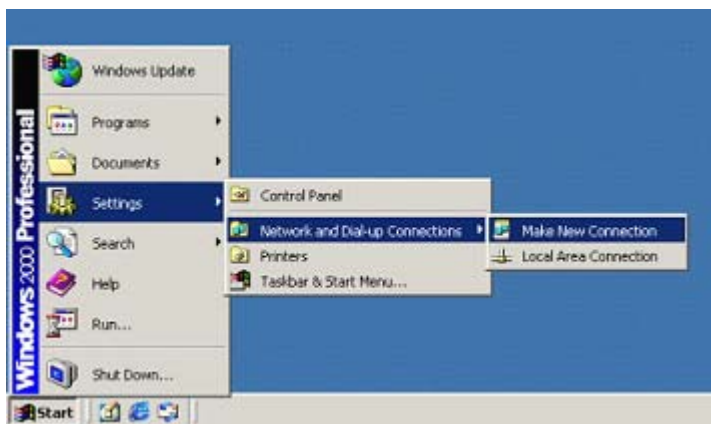
14. Click the "Next" button then click the "Finish" button to complete the setup process.



## For Windows 2000

1. Plug a modem device to a COM port of DVR Site Server machine.
2. Install the driver for the modem device.
3. Click the "Start" button then select Settings > Network and Dial-up Connections > Make New Connection to open the "Network Connection Wizard" dialog window.  
Click the "Next" button.

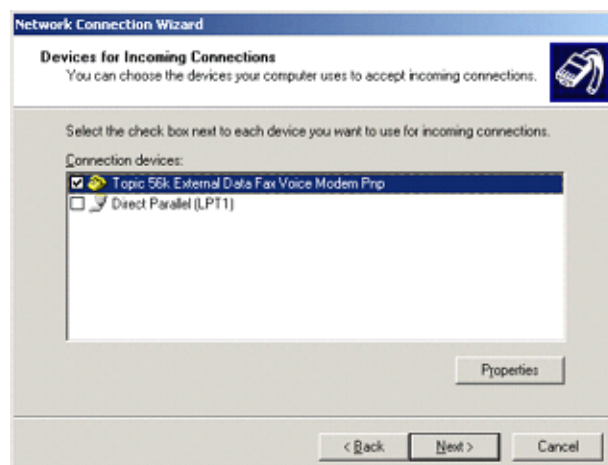
Note: If the "Location Information" dialog box opens, please fill in the area code and the telephone number of the telephone line connected to the modem.



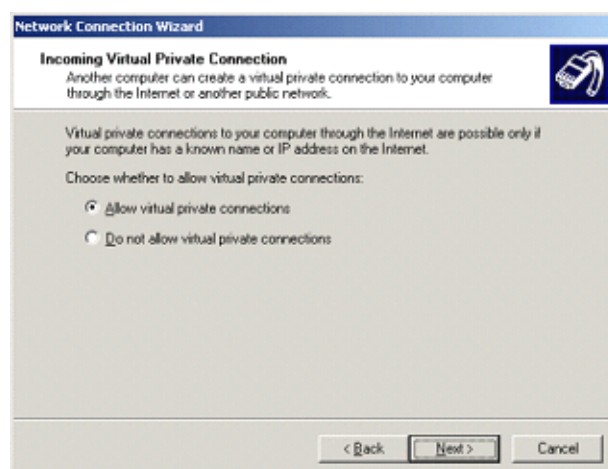
4. Select the "Accept incoming connections" option then click the "Next" button.



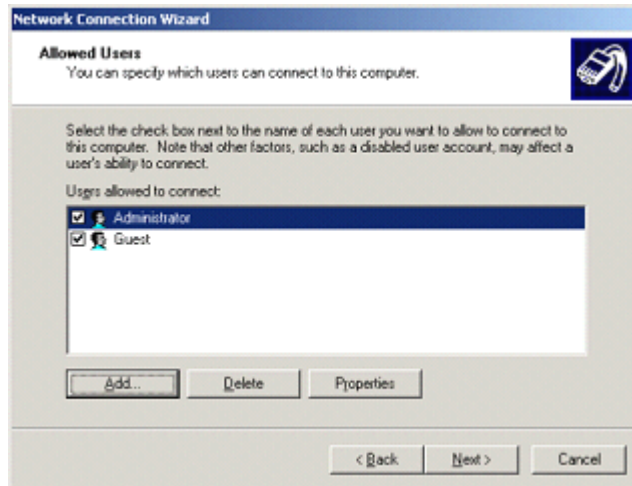
5. In the "Connection devices" list, select the modem driver then click the "Next" button.



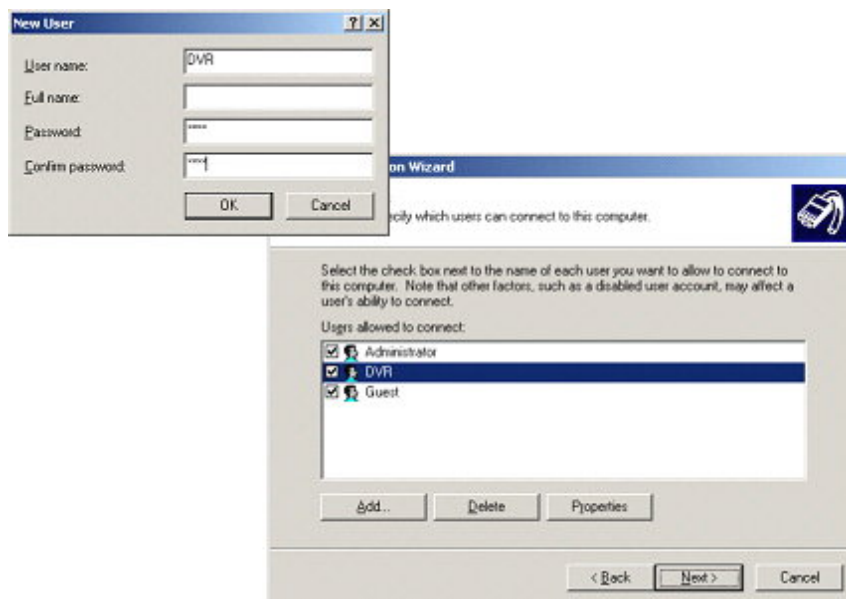
6. Select the "Allow virtual private connections" or "Do not allow virtual private connections" option then click the "Next" button.



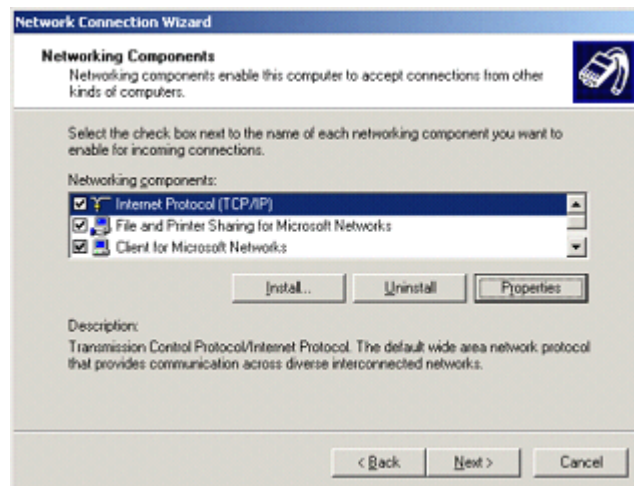
7. Click the "Add" button to open the "New User" dialog.



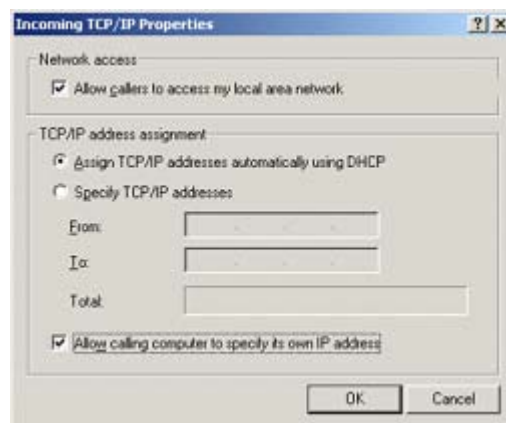
8. Type in "DVR" for "User name", "Password" and "Confirm password" then click the "OK" button to close the dialog box. Click the "Next" button.



9. In the "Networking components" list, select the "Internet Protocol (TCP/IP)" item and click the "Properties" button to open the "Incoming TCP/IP Properties" dialog box.



10. Select the "Allow calling computer to specify its own IP address" option then click the "OK" button to close the dialog box.



11. Click the "Next" button then click the "Finish" button to complete the setup procedure.





## The Operations of Remote Viewer

This Multi-screen Display can have up to 16 split screens to show live video from video cameras on the remote DVR site.

Use the Camera Control Panel to select a camera, connect/disconnect a camera, control PTZ camera, and record video. (See Camera Control Panel" for more details.)

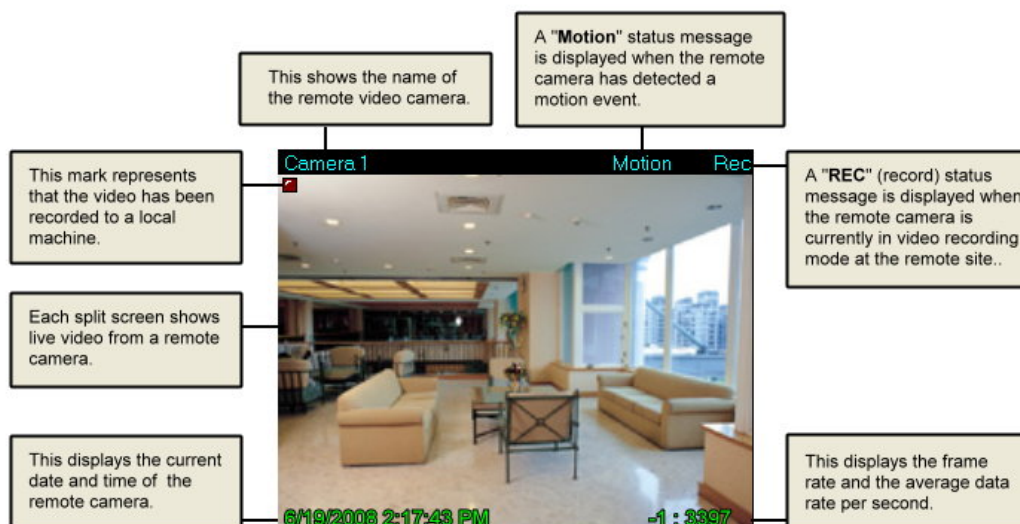


Use the General Control Panel to choose how split screens are displayed, enable voice communication, play recorded video and customize preferences settings. (See General Control Panel" for more details.)

Click this button to connect to a remote DVR site.

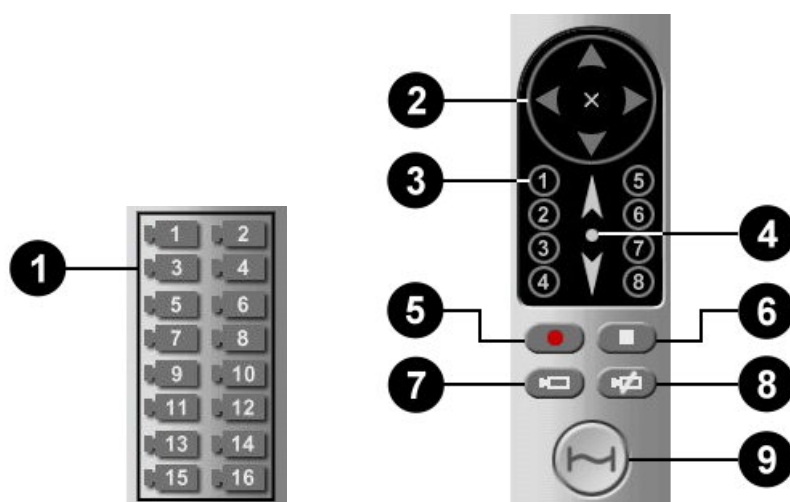
## Split screens

Each split screen on the Remote Viewer interface shows the camera name and the current status of the video camera.



## Camera Control Panel

The Camera Control Panel provides button controls for connecting to the remote site, selecting/viewing remote cameras, and controlling PTZ cameras.

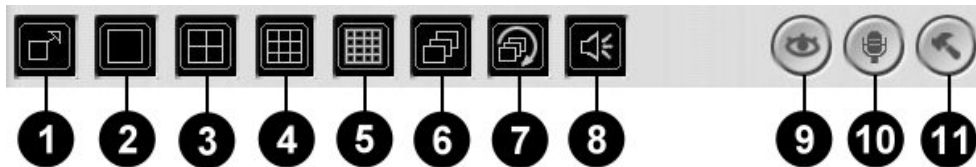




- |          |                          |  |
|----------|--------------------------|--|
| <b>1</b> | Camera buttons           | Click a camera button to select the corresponding remote camera. You need to select a remote camera first to record camera video, control a PTZ camera, or connect/disconnect the camera.                                  |
| <b>2</b> | Pan & Tilt control       | This is the Pan and Tilt control. Click one of the four arrow buttons to adjust the camera angle up, down, left, or right. Click the "cross" button to stop movement.  |
| <b>3</b> | Preset buttons           | The number buttons are Preset buttons. Click a button to move the PTZ camera to the position and angle position specified by the preset button.  |
| <b>4</b> | Zoom control             | Click the up arrow to zoom in, or the down arrow to zoom out. If the PTZ camera does not provide zoom scaling feature, click the up or down arrow continuously to zoom in or out. Click the circle button to stop zooming. |
| <b>5</b> | Record button            | Click this button to start recording video from the selected camera.   |
| <b>6</b> | Stop button              | Click this button to stop recording the video from the selected camera.  |
| <b>7</b> | Connect Camera button    | Click to display the "Log In" dialog box to connect to the selected remote camera.   |
| <b>8</b> | Disconnect Camera button | Click to disconnect the selected camera.   |
| <b>9</b> | Connect Site button      | Click to display the "Log In" dialog box to connect to a remote DVR site. Click again to disconnect all camera connections.  |

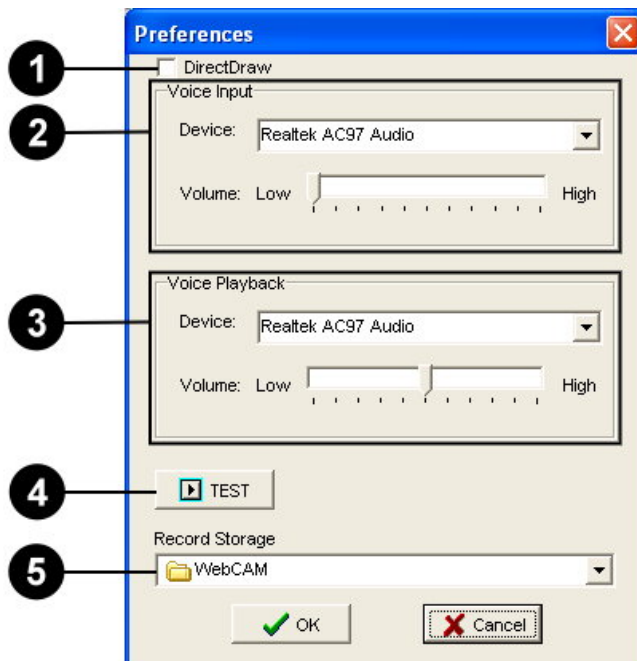
## General Control Panel

The General Control Panel provides button controls for switching between 1/4/9/16 split screens display, playing video recordings, and customizing preference settings.



- |                                  |   |
|----------------------------------|---|
| <b>1</b> Full Screen button      | Toggles between full-screen and normal display mode.  |
| <b>2</b> Single View button      | Click to display the split screen in single view.   |
| <b>3</b> 4 Split Screens button  | Click to split the Multi-screen display into 4 split screens.   |
| <b>4</b> 9 Split Screens button  | Click to split the Multi-screen display into 9 split screens.   |
| <b>5</b> 16 Split Screens button | Click to split the Multi-screen display into 16 split screens.  |
| <b>6</b> Next Page button        | If there are more active video cameras than the selected split screen view, click to display the next set of video feed from the cameras.   |
| <b>7</b> Loop Page button        | If there are more active video cameras than the selected split screen view, click to loop the video feed from the cameras on the split screens.   |
| <b>8</b> Live Sound button       | Click to listen to live audio that is associated with camera in the remote site.  |
| <b>9</b> Record List button      | Click to display the list of video recordings.  |
| <b>10</b> Talk button            | Click to enable the two-way voice communication to a remote DVR site. Click again to disable it. If there is a camera selected, the target of the voice communication is to the DVR site where the selected camera is on. If there is no camera selected, the first connected camera's DVR site is the target of the voice communication. |
| <b>11</b> Preferences button     | Click to open the Preferences dialog box.   |

## Preference Settings



- |          |                       |  |
|----------|-----------------------|--|
| <b>1</b> | <b>DirectDraw</b>     | Use DirectDraw Engine to display video. This option can reduce CPU consumption and use anti-alias feature. Please make sure your system can support DirectDraw function before checking this option.   |
| <b>2</b> | <b>Voice Input</b>    | Displays the audio device used by your input device (e.g. microphone) to capture your voice. You can also adjust input device's volume here. If you have more than one audio device installed, select the device you want to use from the drop-down menu.                                |
| <b>3</b> | <b>Voice Playback</b> | Displays the audio device used by your playback device (e.g. speakers) to play back the voice from your counterpart. You can also adjust the playback device's volume here. If you have more than one audio device installed, select the device you want to use from the drop-down menu. |
| <b>4</b> | <b>Test button</b>    | Press the button to test the volume of the voice input/ output device.   |
| <b>5</b> | <b>Record Storage</b> | Specify the folder where you want to save video recordings.  |

## **Connecting to multiple cameras from different DVR Site**

### **Servers**

1. Install the Remote Viewer program in your client machine.
2. Launch the Remote Viewer program.
3. Click a split screen.
4. Click the “Connect Camera” button to launch the “Log in” dialog box.
5. Enter the site server information and select a camera that you want to view.
6. Click the “OK” button in the “Log in” dialog box to connect.


Repeat steps 3-5 to connect to other cameras. At most, you can connect to 16 cameras from 16 different DVR Site Servers.

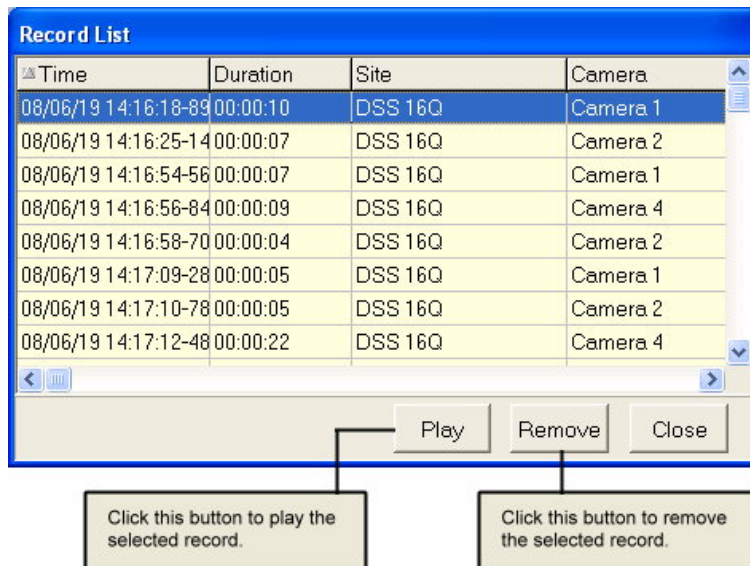
## **Controlling the DVR Site Server desktop remotely**

1. Provide a password to the Administrator account in Site Server.
2. Install the Remote Viewer program in your client machine.
3. Launch the Remote Viewer program.
4. Click a split screen.
5. Click the “Connect Camera” button to launch the “Log in” dialog box.
6. Enter the site server information, administrator account and password.
7. Select “Control” from the Camera list.
8. Click the “OK” button in the “Log in” dialog box to connect.

If you want to view the DVR Site Server desktop in full screen, switch to the single view layout then select full screen as the display mode.

## Viewing recorded videos

When recording surveillance videos from remote cameras, Remote Viewer saves them on the local computer's hard drive. To retrieve and view the recorded videos, click the  button. A Record list window then appears, displaying logs of video recordings.



Select a log entry that shows details about the recorded surveillance video you want to view. Then click the Play button to open the Playback Web page and play back the recorded video.

### Playback Web page

The Playback Web page allows you to control the playback of the selected recorded video and take an image snapshot.



- |   |                       |   |
|---|-----------------------|---|
| ❶ | Displayed information | This shows the remote site name and camera name.  |
| ❷ | Date and Timecode     | This shows the recording date and timecode of the current video frame.  |
| ❸ | Navigation controls   | The buttons from left to right are: "Play", "Pause", "Stop", "Previous Frame" and "Next Frame".                             |
| ❹ | Snapshot button       | Click this button to capture the current video frame, save it as a JPEG file, and then display it on the Snapshot Web page. |

## Snapshot Web page

The Snapshot Web page displays the captured image. The site name, camera name, date and timecode are shown on the image. Press the Print button to send the image out to a printer.

