

# HV Settings Import Export

HV Settings Import Export is a standalone tool to import/export environment settings of huperVision.. With this tool, you can setup DVR systems with predefined environment settings from other systems, or build up a standard DVR system settings for future usage.

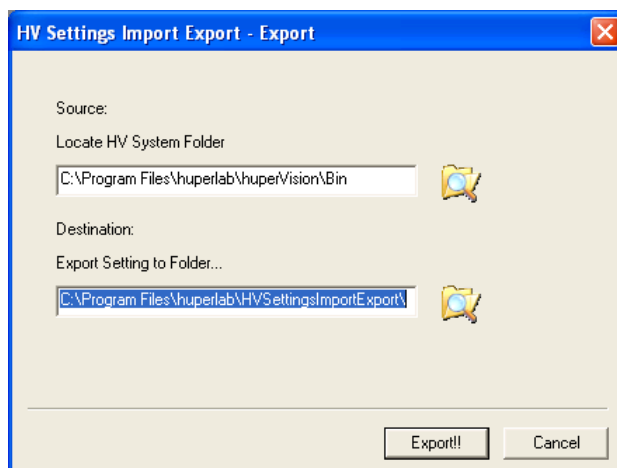
## Export settings

Follow these steps below to export settings from huperVision:

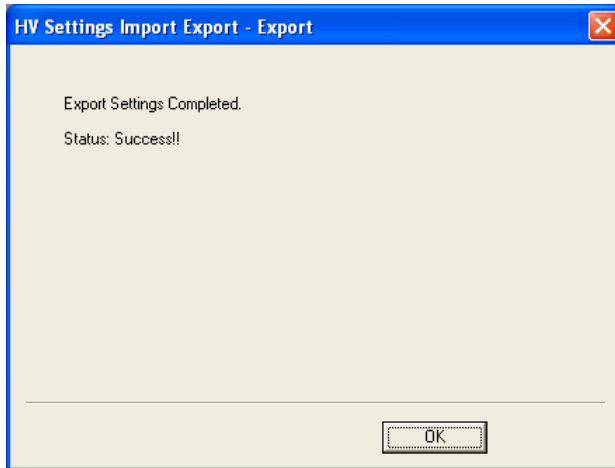
1. Run program HVSettingImportExport.exe and display the main windows as below



2. Click "Export" button to start export process.
3. Select the source (bin subfolder under the local HV system installed).
4. Select the destination folder and click "Export!!" button to start.



5. Click "OK" button to end and exit program.



The export process will export all the settings of current HV system and merge as a single folder.

## Import settings

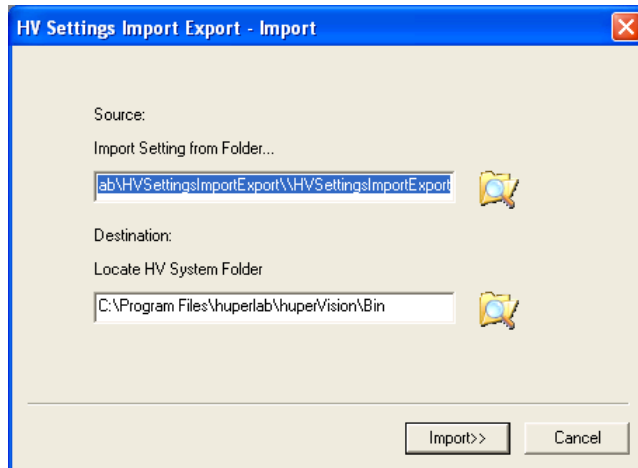
Follow these steps below to import settings to huperVision:

1. Run program HVSettingImportExport.exe and display the main windows as below

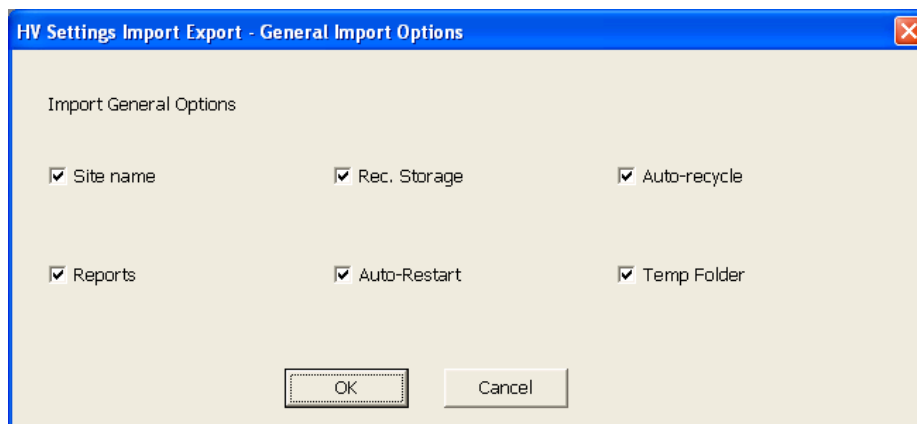
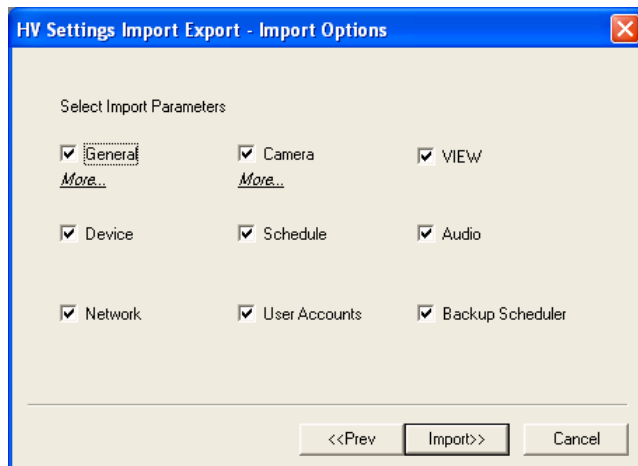


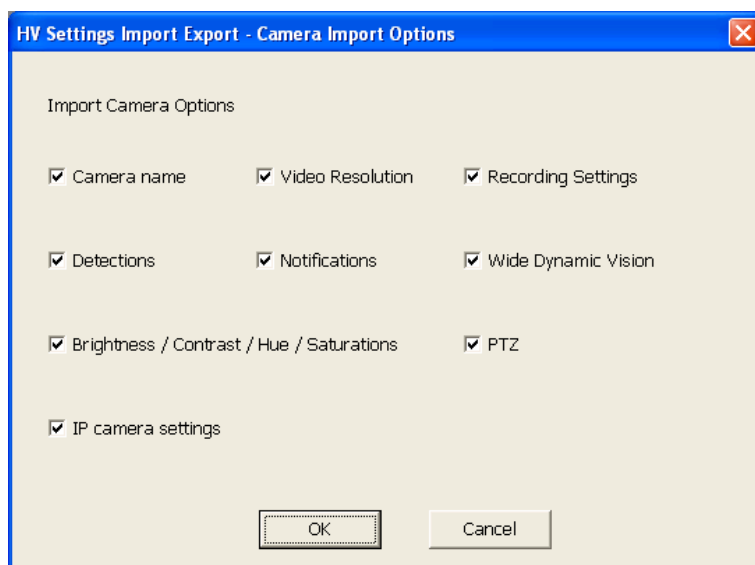
2. Click "Import" button to start import process.

3. Select source folder (where the exported HV system settings located) and destination folder (bin subfolder under the local HV system installed) then click "Import>>" button to next step.

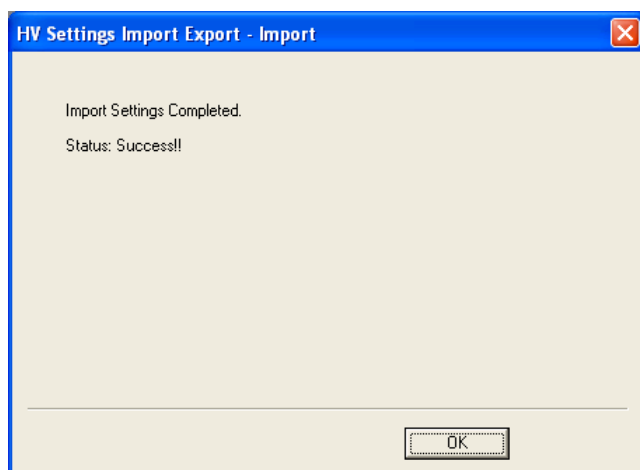


4. Select import parameters by check/uncheck options below. Click "More..." to adjust General/Camera sub options. If all the desired parameters are selected, click "Import>>" to start.





5. Click "OK" button to end and exit program.



## Command Line Mode

Command line instructions for HVSettingsImportExport.exe:

```
HVSettingsImportExport Source Destination /ex /im
Source          Source folder
Destination Destination folder
/ex            Export task
/im           Import task
```

The followings are the command line instructions examples.

To export settings:

```
HVSettingsImportExport c:\program
files\huperlab\huperVision\bin d:\backup /ex
```

To Import setting,

```
HVSettingsImportExport d:\backup c:\program
files\huperlab\huperVision\bin /im
```

Note.

1. The file HImportExportplugins.ini is the import option file which is generated by HVSettingsImportExport.exe under Windows mode.
2. To change import settings, you need to run the program in window mode and change import options. And then use command line mode to do the import task again.
3. Using command line instructions cannot modify the INI file.